

Simplicity in Transit and Display

Our lightweight and easy-to-maneuver dollies offer simplicity in use and storage, while working seamlessly with other display and storage products. Improve your workflow with dollies designed for efficiency, maneuverability, and safety.



Efficient

Save time with a rolling dolly built for both transport and display.



Easy to Maneuver

Simply roll and lock in place, no need for special equipment.



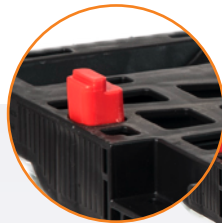
High-quality Design

Durable and light-weight without the hazards of splinters, wires, or foreign materials.

Features and Specifications

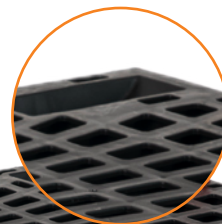
Popup System

Secures your trays and crates with one touch



Locking Wheels

Secure your stack in place

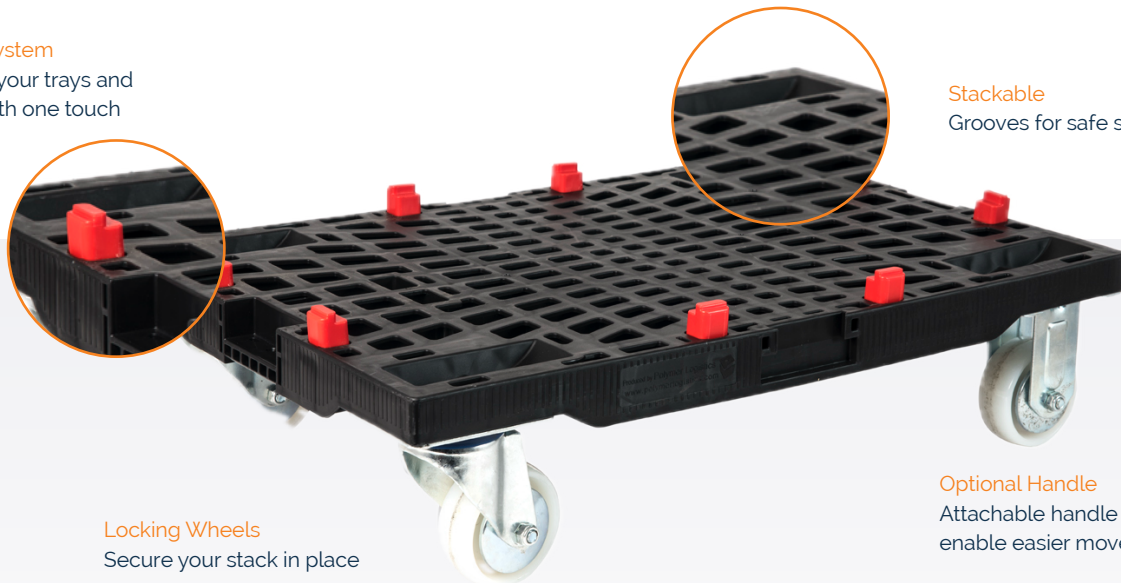


Stackable

Grooves for safe stacking

Optional Handle

Attachable handle for dollies to enable easier movement





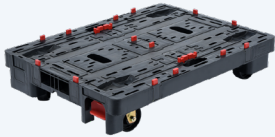
1/4 Dolly

Height	5.9 in
Length	23.6 in
Width	15.7 in
Weight	9.3 lbs
Load capacity	551 lbs
Crate qty	1 per layer



**103
1/2 Dolly**

Height	6.9 in
Length	31.5 in
Width	23.6 in
Weight	21.4 lbs
Load capacity	1,102 lbs
Crate qty	2 per layer



1/2 Dolly

Height	7.1 in
Length	31.5 in
Width	23.6 in
Weight	23.1 lbs
Load capacity	1,102 lbs
Crate qty	2 per layer